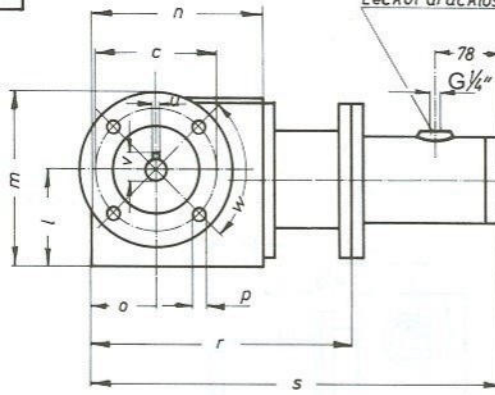
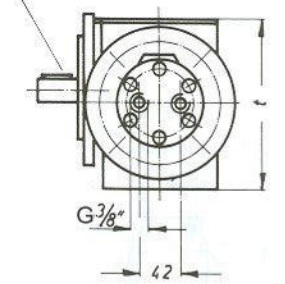


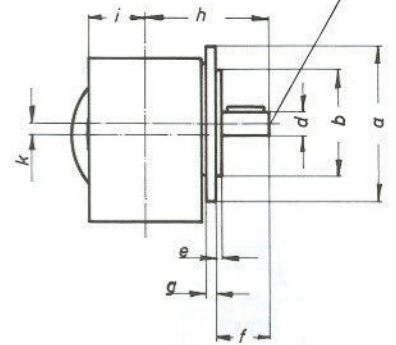
**FLANSCHAUSFÜHRUNG**

Paßfeder nach DIN6885 Blatt 1



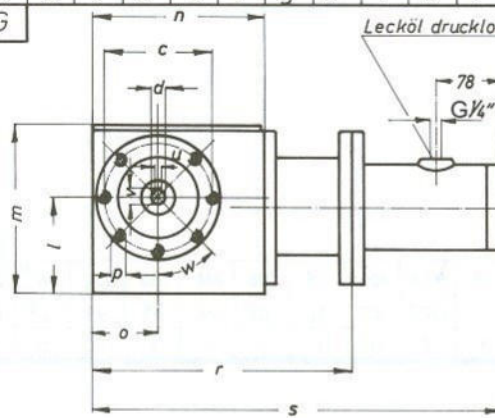
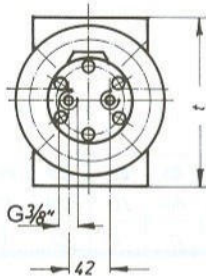
Lecköl drucklos abführen

Zentrierung nach DIN 332 Blatt 2

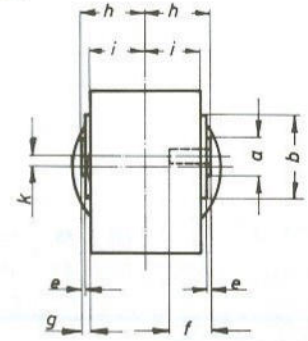


SK02050 F	HMS10-HMS25	160	110 <sub>j6</sub>	130	25 <sub>k6</sub>	4	50	10	135	60	75	98	178	180	70	9	269	437	169	8 <sup>PS9</sup>	28	90°	25
SK12063 F	HMS10-HMS25	200	130 <sub>j6</sub>	165	30 <sub>k6</sub>	4	60	12	156	67	13	119	219	196	75	11	285	453	193	8 <sup>PS9</sup>	33	90°	29
SK12080 F	HMS10-HMS25	200	130 <sub>j6</sub>	165	35 <sub>k6</sub>	4	70	12	184	75	19	146	246	242	101	11	331	499	252	10 <sup>PS9</sup>	38	90°	38
SK33100 F	HMS10-HMS25	250	180 <sub>j6</sub>	215	45 <sub>k6</sub>	4	90	16	232	92	74	182	307	285	122	14	434	602	312	14 <sup>PS9</sup>	485	90°	69
SK43125 F	HMS10-HMS25	350	250 <sub>j6</sub>	300	60 <sub>m5</sub>	5	120	20	307	115	100	222	397	352	150	18	509	677	378	18 <sup>PS9</sup>	64	90°	108
Getriebe	Motoren	a	b	c	d	e	f	g	h	i	k	l	m	n	o	p	r	s	t	u	v	w	kg

**HOHLWELLEN AUSFÜHRUNG**



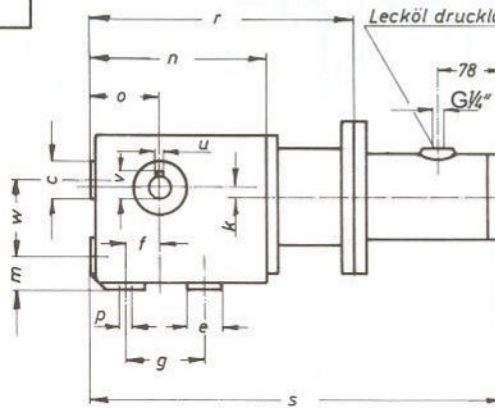
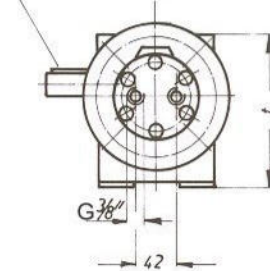
Lecköl drucklos abführen



SK02050 A	HMS10-HMS25	45	95 <sub>j6</sub>	115	25 <sup>H7</sup>	3	45	6	66	60	75	98	180	180	70	M8	269	437	169	8 <sup>PS9</sup>	283	45°	25
SK12063 A	HMS10-HMS25	50	95 <sub>j6</sub>	115	30 <sup>H7</sup>	4	50	7	74	67	130	119	199	196	75	M8	285	453	193	8 <sup>PS9</sup>	333	45°	29
SK12080 A	HMS10-HMS25	65	130 <sub>j6</sub>	165	40 <sup>H7</sup>	5	55	9	84	75	190	146	251	242	101	M10	331	499	252	12 <sup>PS9</sup>	433	45°	38
SK33100 A	HMS10-HMS25	85	180 <sub>j6</sub>	215	50 <sup>H7</sup>	5	70	9	101	92	74	182	311	285	122	M12	434	602	312	14 <sup>PS9</sup>	538	45°	69
SK43125 A	HMS10-HMS25	95	230 <sub>j6</sub>	265	60 <sup>H7</sup>	6	89	10	125	115	100	222	398	352	150	M12	509	677	378	18 <sup>PS9</sup>	644	45°	108
Getriebe	Motoren	a	b	c	d	e	f	q	h	i	k	l	m	n	o	p	r	s	t	u	v	w	kg

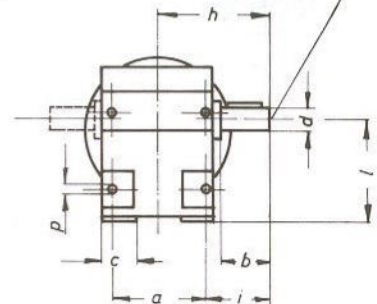
**FUSS AUSFÜHRUNG**

Paßfeder nach DIN6885 Blatt 1



Lecköl drucklos abführen

Zentrierung nach DIN 332 Blatt 2



SK02050	HMS10-HMS25	100	50	34	25	35	35	80	115	65	75	100	35	185	75	11	274	442	162	8 <sup>PS9</sup>	28	80	25
SK12063	HMS10-HMS25	110	60	40	30	40	45	100	134	79	13	112	35	200	80	11	289	457	182	8 <sup>PS9</sup>	33	100	29
SK12080	HMS10-HMS25	130	70	40	35	40	60	130	160	95	19	140	40	241	100	14	330	498	227	10 <sup>PS9</sup>	38	130	38
SK33100	HMS10-HMS25	150	90	50	45	50	75	135	195	120	74	180	70	288	125	18	437	605	288	14 <sup>PS9</sup>	485	135	69
SK43125	HMS10-HMS25	200	120	60	60	70	92	180	225	155	100	225	82	352	150	22	509	677	348	18 <sup>PS9</sup>	64	180	108
Getriebe	Motoren	a	b	c	d	e	f	g	h	i	k	l	m	n	o	p	r	s	t	u	v	w	kg

**HYDRO - GETRIEBEMOTOREN**

**SK3513.8**



**MW Hydraulik GmbH**

Tel.: 0 61 88 / 8 12 91 Lange Hecke 7  
info@mw-hydraulik.de 63796 Kahl am Main